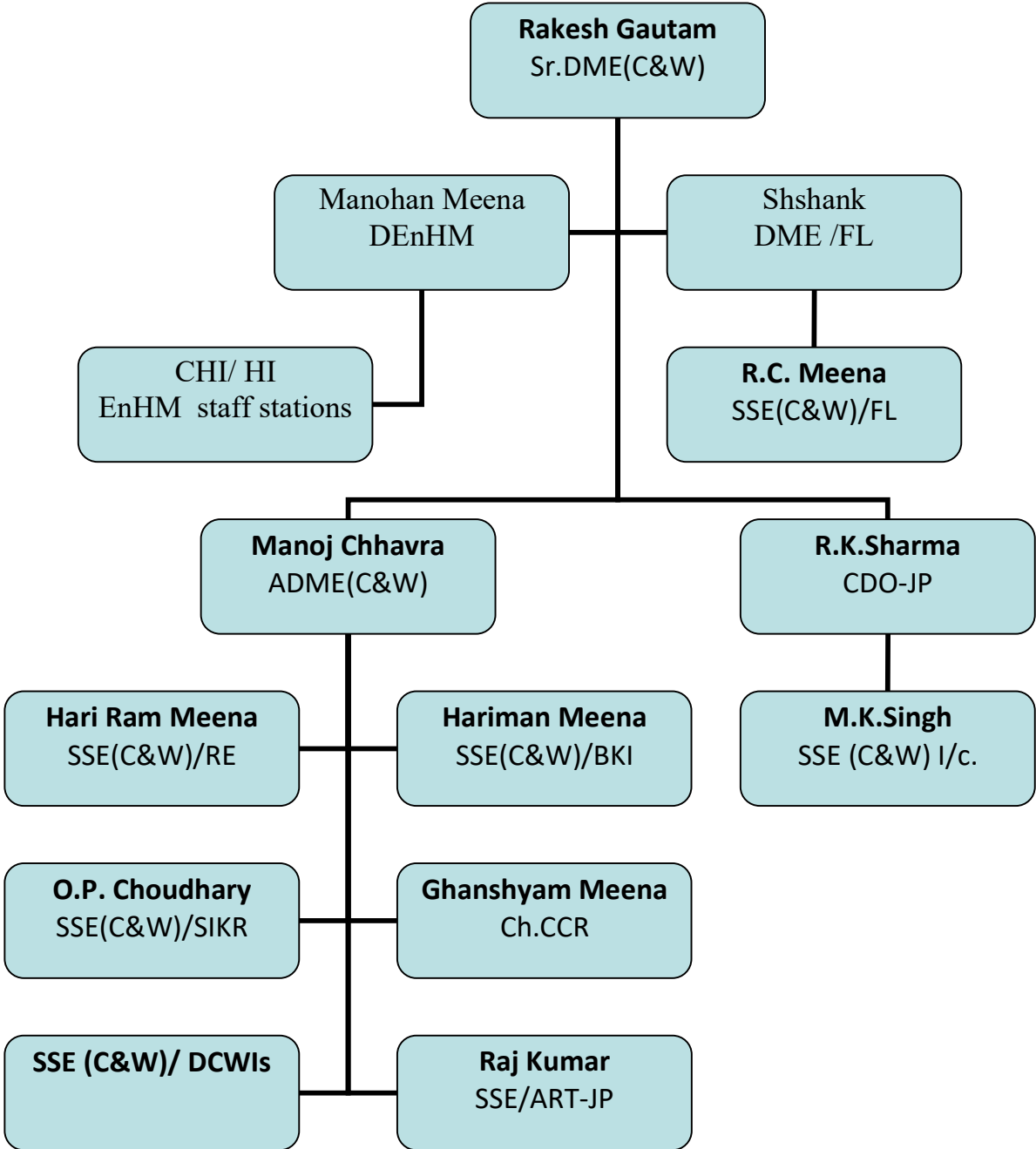


**Organization Structure –Mechanical (C&W)**



### C&W Activities & Information at Glance

S.N.	Station	Activities
<b>1</b>	<b>JP</b>	<ul style="list-style-type: none"> <li>• <b>Primary maintenance:</b> 22 Trains, 32 rakes and total coach holding 673</li> <li>• <b>Secondary maintenance</b> (03 trains)</li> <li>• <b>Terminal attention</b> to 22 platform return trains</li> <li>• <b>Sick line</b> (Average IOH per month 33)</li> <li>• Linen Management</li> <li>• Mechanized cleaning of nominated 24 bypass trains at JP under CTS Scheme.</li> <li>• Onboard Houskeeping service ( OBHS) in 17 JP based trains</li> <li>• Watering in trains.</li> <li>• Water Recycling plant ( cap 0.5 MLD)</li> <li>• Solid waste Management Plant ( Cap 500 Kg per day)</li> <li>• Maintenance of BG-ART &amp; ARME.</li> </ul>
<b>2</b>	<b>RE</b>	<ul style="list-style-type: none"> <li>• Terminal examination of 24 Platform return trains</li> <li>• Intensive Examination of CC rakes at KIIP (06 rakes based)</li> <li>• Maintenance of BG- SPART</li> <li>• En-route trouble-shooting of Rolling stock.</li> </ul>
<b>3</b>	<b>FL</b>	<ul style="list-style-type: none"> <li>• Intensive Examination of Goods trains (10 rakes based at FL/MNDV)</li> <li>• Sick line</li> <li>• ROH</li> <li>• Terminal attention of 05 Platform returns coaching trains</li> <li>• En-route trouble-shooting of Rolling stock</li> </ul>
<b>4</b>	<b>BKI</b>	<ul style="list-style-type: none"> <li>• Terminal examination of 03 Platform return trains</li> <li>• En-route trouble-shooting of Rolling stock</li> </ul>
<b>5</b>	<b>SIKR</b>	<ul style="list-style-type: none"> <li>• Terminal examination of 03 Platform return trains</li> </ul>