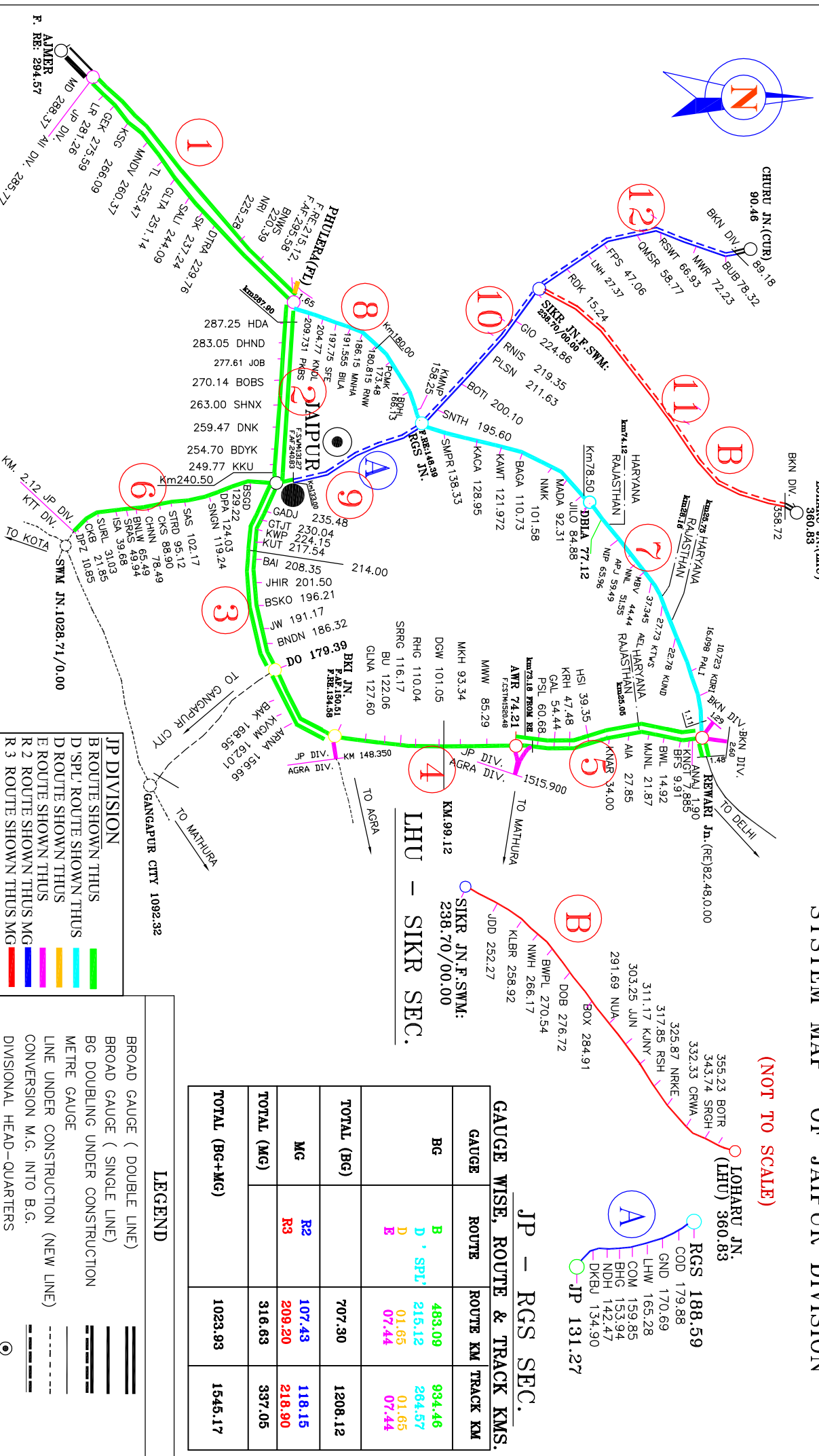


NORTH WESTERN RAILWAY

SYSTEM MAP OF JAIPUR DIVISION

(NOT TO SCALE)



JP - RGS SEC.

GAUGE WISE, ROUTE & TRACK KMS.

GAUGE	ROUTE	ROUTE KM	TRACK KM
BG	B	483.09	934.46
	D + SPL	215.12	284.57
	D	01.65	01.65
	E	07.44	07.44
TOTAL (BG)		707.30	1208.12
MG	R2	107.43	118.15
	R3	209.20	218.90
TOTAL (MG)		316.63	337.05
TOTAL (BG+MG)		1023.93	1545.17

LEGEND

- BROAD GAUGE (DOUBLE LINE)
- BROAD GAUGE (SINGLE LINE)
- BG DOUBLING UNDER CONSTRUCTION
- METRE GAUGE
- LINE UNDER CONSTRUCTION (NEW LINE)
- CONVERSION M.G. INTO B.G.
- DIVISIONAL HEAD-QUARTERS

- ### JP DIVISION
- B ROUTE SHOWN THUS
 - D /SPL/ ROUTE SHOWN THUS
 - D ROUTE SHOWN THUS
 - E ROUTE SHOWN THUS
 - R 2 ROUTE SHOWN THUS MG
 - R 3 ROUTE SHOWN THUS MG

LHU - SIKR SEC.

SIKR JN.F.SWM:
338.70/00.00

KM.99.12

LOHARU JN.
(LHU) 360.83

RGS 188.59

JP 131.27