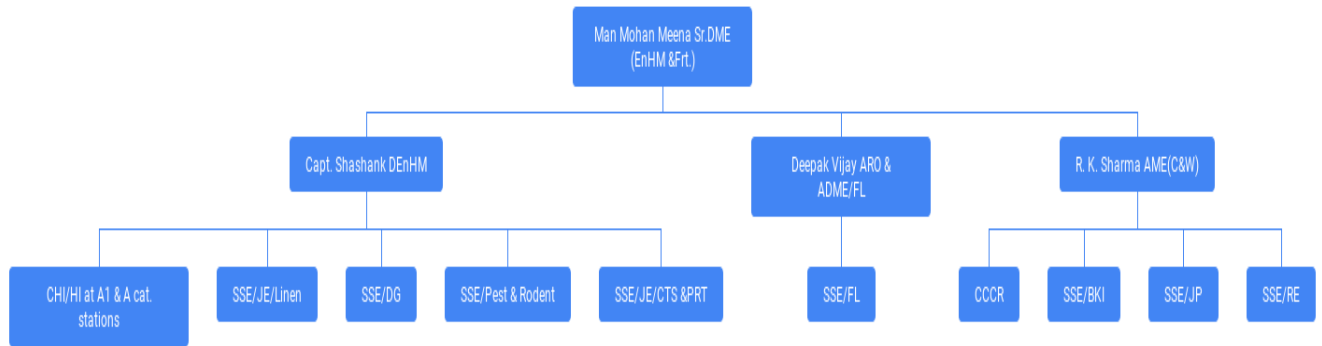


## Organization Structure of Mechanical (EnHM& Frt.) Dept.



## Mechanical (EnHM& Freight) Activities & Information at Glance

S. No.	Station	Activities
1.	JP	<ul style="list-style-type: none"> <li>• Mechanized cleaning of JP station.</li> <li>• Linen Management of trains.</li> <li>• Mechanized cleaning of Nominated 22 By-pass train (Avg. 9 trains per day) under CTS Scheme and 22 platform return trains (Avg. 11 trains per day) under PRT scheme with watering.</li> <li>• Watering in nominated 80 by-pass trains (avg. 37 trains per day)</li> <li>• Pest &amp; Rodent control of JP station and coaches of JP based trains with complaint attention.</li> <li>• Solid Waste, WTE and WRP plant.</li> <li>• En-route trouble-shooting of Freight stock.</li> </ul>

2.	FL	<ul style="list-style-type: none"> <li>• Housekeeping of FL station.</li> <li>• Pest &amp; Rodent control of FL station.</li> <li>• Cleaning of 05 Platform Return Trains.</li> <li>• Intensive Examination of Goods trains (11 rakes based at FL/MNDV)</li> <li>• Sick line</li> <li>• ROH</li> <li>• En-route trouble-shooting of Freight stock.</li> <li>• Maintenance of EIMWB at JOB station.</li> </ul>
3.	RE	<ul style="list-style-type: none"> <li>• Housekeeping of RE station</li> <li>• Pest &amp; Rodent control of RE station and complaint attention.</li> <li>• Cleaning and watering of 25 Platform Return Trains,</li> <li>• Intensive Examination of 05 CC rakes at KIIP and 05 CC rakes at BWL.</li> <li>• En-route trouble-shooting of Freight stock.</li> <li>• Maintenance of EIMWB at MBV station.</li> </ul>
4.	GADJ	<ul style="list-style-type: none"> <li>• Housekeeping of GADJ station.</li> <li>• Pest &amp; Rodent control of GADJ station.</li> </ul>
5.	AWR	<ul style="list-style-type: none"> <li>• Housekeeping of AWR station.</li> <li>• Pest &amp; Rodent control of AWR station.</li> </ul>
6.	BKI	<ul style="list-style-type: none"> <li>• Housekeeping of BKI station.</li> <li>• Pest &amp; Rodent control of BKI station.</li> <li>• Cleaning of 03 Platform return trains.</li> <li>• En-route trouble-shooting of Freight stock.</li> </ul>
7.	Over JP Division	<ul style="list-style-type: none"> <li>• Monitoring &amp; coordination of all environment issues. However planning, sanction and execution of all environment related works will be dealt by the concerned departments.</li> </ul>