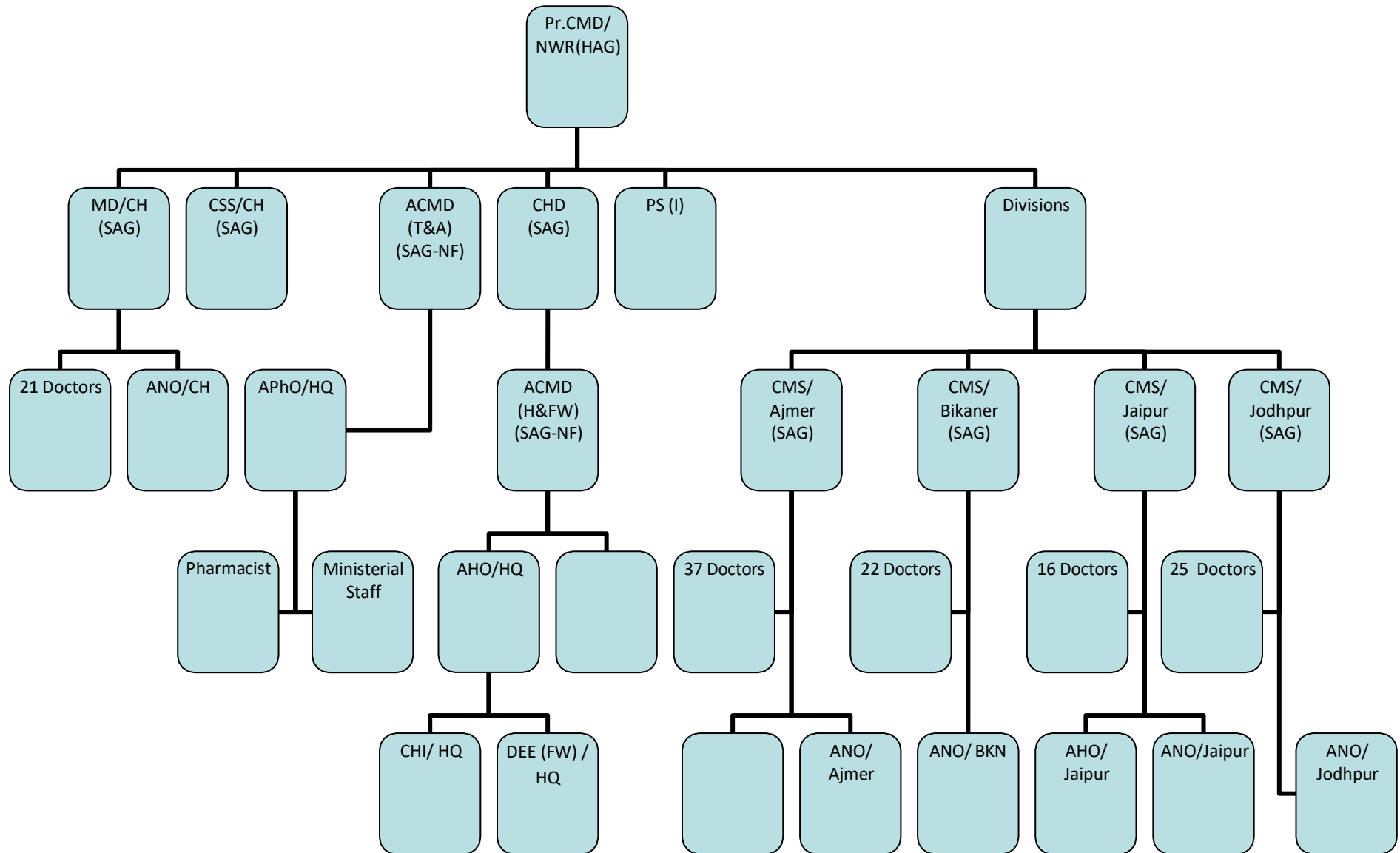


Organization chart of Medical Department-NWR



Hospitals & Health Units over NWR

Division	Central Hospital, Jaipur	Divisional Hospital	Sub Divisional Hospital	Health Units	No. Of Beds
Ajmer	-	01 (186 Beds)	02 ABR 12 Beds RPZ 09 Beds	08 + 2 FAP	207
Bikaner	-	01 (100 Beds)	-	09	100
CH-Jaipur	01 (150 IPD Beds)	-	-	-	150
Jaipur			02 BKI 10 Beds RE 20 Beds	06	30
Jodhpur	-	01 (117 Beds)	-	08	117
Total	01	03	04	31 + 2 FAP*	604

* FAP- First Aid post.