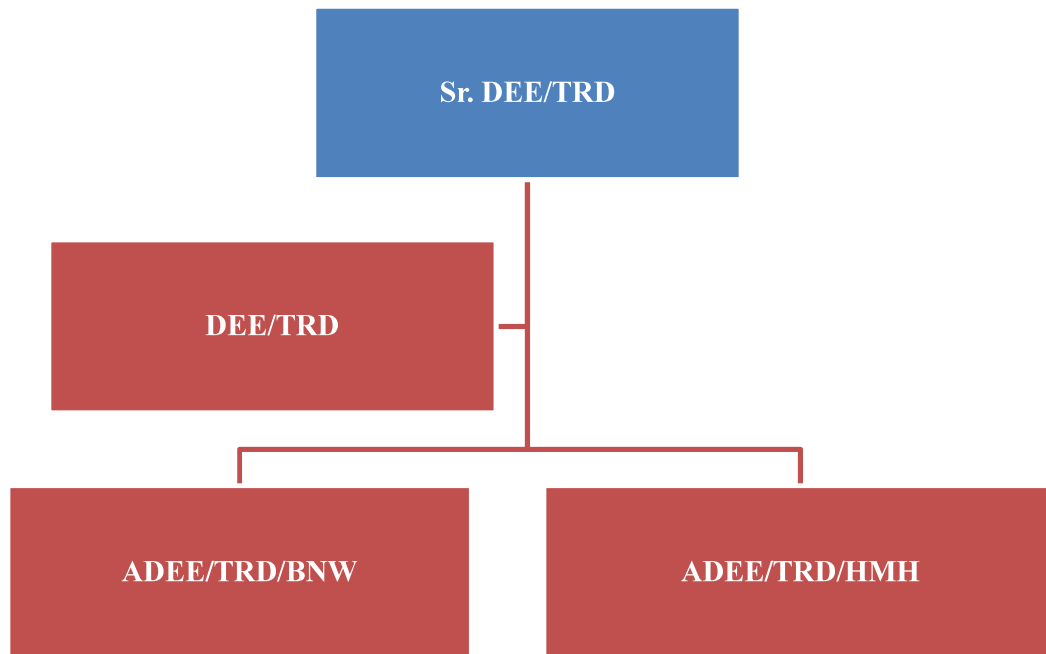


ELECTRICAL (TRD)



ORGANIZATION



OVERVIEW:

The organization is headed by Sr.DEE and assisted by divisional officer at Bikaner, sub-divisional officers at Bhiwani and Hanumangarh. Bikaner division consists of 21 nos. OHE cum PSI depots. The OHE cum PSI depots carry-out preventive maintenance of the traction installation i.e. the wires over the track from which the electric locomotive pantograph draws the current and maintenance of traction sub-stations which feed the OHE with 25 KV AC traction.